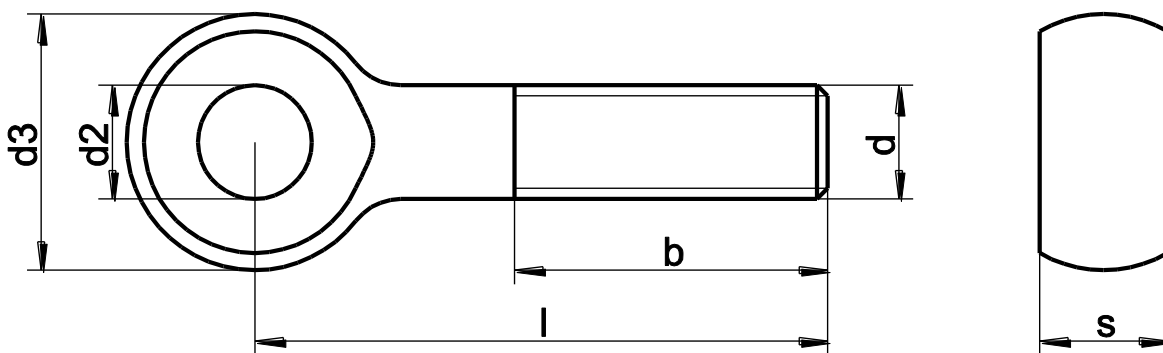


DIN 444
Knevelbout

316L.NL



diam	M6	M8	M10	M12	M16	M20	M24
d2	6	8	10	12	16	18	22
d3	14	18	20	25	32	40	45
s min.	6.85	8.85	11.82	13.82	16.82	21.79	24.79
b l<125	18	22	26	30	38	46	54
b l>125		28	32	36	44	52	60