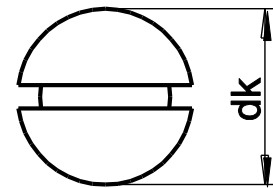
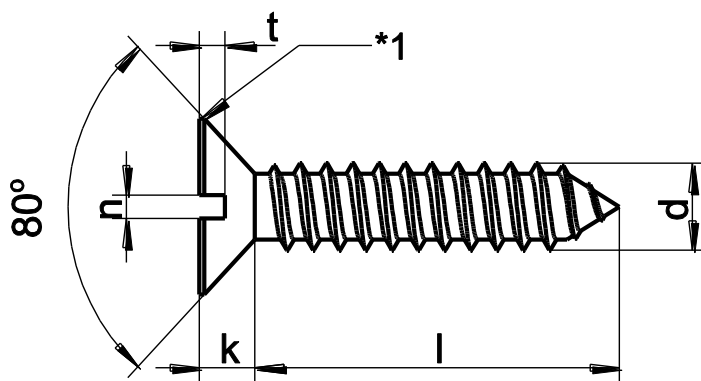
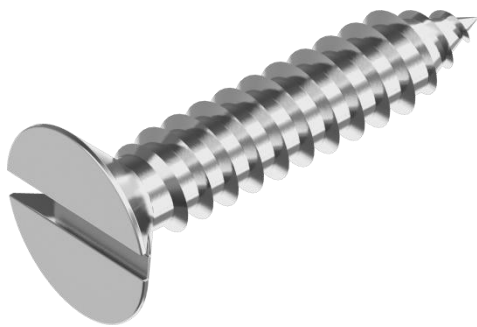


DIN 7972
Plaatschroef



diam	ST2.2	ST2.9	ST3.5	ST3.9	ST4.2	ST4.8	ST5.5	ST6.3
dk	4.3	5.5	6.8	7.5	8.1	9.5	10.8	12.4
k	1.3	1.7	2.1	2.3	2.5	3.0	3.4	3.8
n	0.6	0.8	1.0	1.0	1.2	1.2	1.6	1.6
t max	0.60	0.75	0.95	1.05	1.15	1.35	1.50	1.75
bit	0.6X3.5	0.8X4.0	1.0X5.5	1.0X5.5	1.2X7.0	1.2X7.0	1.6X9.0	1.6X9.0