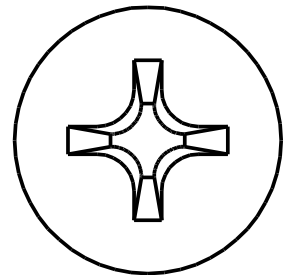
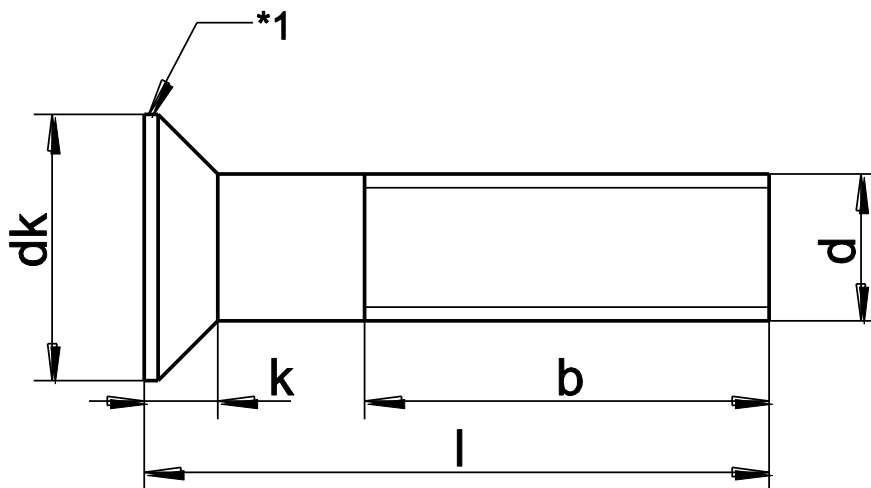


DIN 965  
Metaalschroef



diam	M1.6	M2	M2.5	M3	M4	M5	M6	M8	M10
dk	3.0	3.8	4.7	5.6	7.5	9.2	11.0	14.5	18.0
k max.	0.96	1.20	1.50	1.65	2.20	2.50	3.00	4.00	5.00
b min.	15	16	18	19	22	25	28	34	40
bit	P0	P1	P1	P1	P2	P2	P3	P4	P4